



SINGLE SEASON TEAM RECORDS

Wins

Most Wins/Season

| | | |
|----|----|---------|
| 1. | 30 | 1994-95 |
| 2. | 28 | 1980-81 |
| 2. | 28 | 1981-82 |
| 4. | 27 | 1988-89 |
| 4. | 27 | 1992-93 |
| 4. | 27 | 1993-94 |
| 7. | 26 | 1995-96 |
| 8. | 25 | 2012-13 |
| 9. | 24 | 2001-02 |
| 9. | 24 | 2002-03 |

Fewest Wins/Season: 2, 1975

Longest Winning Streak

| | | |
|-----|----|---------|
| 1. | 25 | 1994-95 |
| 2. | 20 | 1988-89 |
| 3. | 15 | 1992-93 |
| 4. | 14 | 1991-92 |
| 5. | 12 | 2011-12 |
| 5. | 12 | 1980-81 |
| 5. | 12 | 1981-82 |
| 8. | 11 | 2007-08 |
| 8. | 11 | 2012-13 |
| 10. | 10 | 2012-13 |

Longest Conference Win Streak: 23, Feb. 4, 1993 – Jan. 7, 1996

Longest Win Streak to Start a Season: 15, Dec. 1, 1992 – Jan. 16, 1993

Longest Losing Streak: 11, Jan. 22, 2005 – Feb. 26, 2005

Longest Conference Losing Streak: 11, Jan. 22, 2005 – Feb. 26, 2005

Highest Winning Percentage

| | | |
|----|-------------|---------|
| 1. | .909 (30-3) | 1994-95 |
| 2. | .871 (27-4) | 1988-89 |
| 2. | .871 (27-4) | 1992-93 |
| 3. | .848 (28-5) | 1980-81 |
| 4. | .843 (27-5) | 1993-94 |
| 5. | .781 (25-7) | 2012-13 |

Lowest Winning Percentage: .154 (2-11), 1975

Games

Games Played

| | | | |
|-----|----|---------|---------|
| 1. | 36 | (28-8) | 1981-82 |
| 2. | 35 | (21-14) | 2011-12 |
| 2. | 35 | (26-9) | 1995-96 |
| 4. | 34 | (19-15) | 2013-14 |
| 4. | 34 | (18-16) | 2010-11 |
| 4. | 34 | (19-15) | 2007-08 |
| 4. | 34 | (24-10) | 2001-02 |
| 8. | 33 | (28-5) | 1980-81 |
| 8. | 33 | (30-3) | 1994-95 |
| 10. | 32 | (18-14) | 1977-78 |
| 10. | 32 | (21-11) | 1987-88 |
| 10. | 32 | (27-5) | 1993-94 |
| 10. | 32 | (23-9) | 1996-97 |
| 10. | 32 | (24-8) | 2002-03 |
| 10. | 32 | (25-7) | 2012-13 |

Fewest Games: 13 (2-11), 1975

Points

Most Points

| | | |
|-----|-------|---------|
| 1. | 2,793 | 1981-82 |
| 2. | 2,770 | 1980-81 |
| 3. | 2,588 | 1978-79 |
| 3. | 2,588 | 2001-02 |
| 4. | 2,549 | 1979-80 |
| 5. | 2,547 | 1994-95 |
| 6. | 2,439 | 1987-88 |
| 7. | 2,404 | 1993-94 |
| 8. | 2,397 | 2000-01 |
| 9. | 2,381 | 1995-96 |
| 10. | 2,358 | 1988-89 |

Fewest Points: (minimum 20 games) 1,215, 1975-76

Scoring

Highest Scoring Average

| | | |
|-----|------|----------------|
| 1. | 87.9 | 1979-80 (2549) |
| 2. | 83.9 | 1980-81 (2770) |
| 3. | 83.5 | 1978-79 (2588) |
| 4. | 77.6 | 1981-82 (2793) |
| 5. | 77.3 | 1982-83 (2243) |
| 5. | 77.3 | 2000-01 (2397) |
| 6. | 77.1 | 1994-95 (2547) |
| 7. | 76.2 | 1987-88 (2439) |
| 8. | 76.1 | 1988-89 (2358) |
| 8. | 76.1 | 2001-02 (2588) |
| 9. | 75.1 | 1993-94 (2404) |
| 10. | 74.3 | 1992-93 (2302) |

Lowest Scoring Average: (minimum 20 games) 60.7, 2011-12

Highest Scoring Margin

| | | |
|-----|-------|---------|
| 1. | +24.2 | 1980-81 |
| 2. | +19.3 | 1994-95 |
| 3. | +17.0 | 1992-93 |
| 4. | +16.1 | 1981-82 |
| 5. | +14.9 | 1979-80 |
| 6. | +13.9 | 1993-94 |
| 6. | +13.9 | 2001-02 |
| 7. | +11.5 | 1978-79 |
| 8. | +11.3 | 1991-92 |
| 9. | +11.1 | 1988-89 |
| 10. | +10.5 | 2012-13 |

Lowest Scoring Margin: (minimum 20 games) -9.7, 1983-84

Lowest Opponent Scoring Average/Season

| | | |
|-----|------|----------------|
| 1. | 54.5 | 2012-13 (1744) |
| 2. | 56.8 | 1996-97 (1817) |
| 3. | 57.3 | 1992-93 (1775) |
| 4. | 57.8 | 1994-95 (1908) |
| 5. | 58.3 | 2002-03 (1866) |
| 6. | 58.4 | 2011-12 (2043) |
| 7. | 58.7 | 1991-92 (1821) |
| 8. | 59.7 | 1980-81 (1970) |
| 9. | 59.8 | 1975-76 (1195) |
| 10. | 61.2 | 1993-94 (1958) |

Highest Opponent Scoring Average/Season: 77.6, 1983-84

Field Goals

Field Goals Made

| | | |
|-----|------|---------|
| 1. | 1166 | 1980-81 |
| 2. | 1100 | 1981-82 |
| 3. | 1047 | 1978-79 |
| 4. | 1002 | 1979-80 |
| 5. | 977 | 1977-78 |
| 6. | 949 | 1994-95 |
| 7. | 930 | 2001-02 |
| 8. | 896 | 1982-83 |
| 8. | 896 | 1987-88 |
| 9. | 883 | 1993-94 |
| 10. | 873 | 1988-89 |

Fewest Field Goals Made: (minimum 20 games) 507, 1975-76

Field Goal Percentage

| | | |
|-----|------|---------|
| 1. | .552 | 1977-78 |
| 2. | .528 | 1976-77 |
| 3. | .525 | 1980-81 |
| 4. | .477 | 1982-83 |
| 5. | .476 | 1985-86 |
| 6. | .469 | 1986-87 |
| 7. | .464 | 1981-82 |
| 8. | .463 | 1988-89 |
| 9. | .457 | 1987-88 |
| 10. | .456 | 1992-93 |
| 10. | .456 | 2001-02 |

Lowest Field Goal Percentage:

(minimum 20 games) .394,
2012-13

Field Goal Pct. Defense (Opp. FG%)

| | | |
|-----|------|---------|
| 1. | .350 | 2012-13 |
| 2. | .358 | 1980-81 |
| 3. | .369 | 2013-14 |
| 4. | .372 | 2011-12 |
| 5. | .375 | 1981-82 |
| 6. | .384 | 2001-02 |
| 7. | .388 | 2007-08 |
| 8. | .389 | 1994-95 |
| 9. | .390 | 2002-03 |
| 10. | .391 | 1996-97 |

Highest Opponent Field Goal Pct: .474, 1983-84

3-Point Field Goals

3-Pointers Made

| | | |
|-----|-----|---------|
| 1. | 236 | 2007-08 |
| 2. | 229 | 2009-10 |
| 3. | 219 | 2010-11 |
| 4. | 196 | 2001-02 |
| 5. | 182 | 2011-12 |
| 6. | 175 | 2003-04 |
| 7. | 158 | 2002-03 |
| 8. | 154 | 2000-01 |
| 9. | 151 | 2008-09 |
| 10. | 144 | 2013-14 |
| 10. | 144 | 2004-05 |

Fewest 3-Pointers Made: 2, 1986-87

3-Point Percentage

| | | |
|------------------------|------|-------------------|
| (minimum 100 attempts) | | |
| 1. | .408 | 1988-89 (58-142) |
| 2. | .391 | 2001-02 (196-501) |
| 3. | .385 | 1992-93 (85-221) |
| 3. | .385 | 2000-01 (154-400) |
| 4. | .371 | 1996-97 (135-364) |
| 5. | .370 | 2002-03 (158-427) |
| 6. | .367 | 1987-88 (51-139) |
| 7. | .365 | 2003-04 (175-480) |
| 8. | .349 | 1997-98 (139-398) |
| 9. | .344 | 2009-10 (229-665) |
| 10. | .343 | 1993-94 (127-370) |

Lowest 3-Point Percentage: .260, 1990-91 (44-169)

Free Throws

Free Throws Made

| | | |
|-----|-----|---------|
| 1. | 594 | 1981-82 |
| 1. | 594 | 1987-88 |
| 3. | 593 | 2000-01 |
| 4. | 554 | 1988-89 |
| 5. | 545 | 1979-80 |
| 6. | 543 | 1995-96 |
| 7. | 538 | 2013-14 |
| 8. | 532 | 2001-02 |
| 9. | 517 | 1986-87 |
| 10. | 516 | 1992-93 |

Fewest Free Throws Made: 201, 1975-76

Free Throw Percentage

| | | |
|-----|------|-------------------|
| 1. | .774 | 2000-01 (593-766) |
| 2. | .764 | 2001-02 (532-696) |
| 3. | .761 | 2009-10 (360-473) |
| 4. | .758 | 1986-87 (517-682) |
| 5. | .754 | 2007-08 (475-630) |
| 6. | .752 | 2002-03 (456-606) |
| 7. | .751 | 1979-80 (545-726) |
| 8. | .750 | 1988-89 (554-739) |
| 9. | .743 | 2003-04 (404-544) |
| 10. | .740 | 2005-06 (490-662) |

Lowest Free Throw Percentage: .460, 1975-76 (201-437)

Rebounds

Total Rebounds

| | | |
|-----|------|---------|
| 1. | 1760 | 1981-82 |
| 2. | 1636 | 1977-78 |
| 3. | 1408 | 2013-14 |
| 4. | 1616 | 1980-81 |
| 5. | 1440 | 1978-79 |
| 6. | 1402 | 2011-12 |
| 7. | 1380 | 2012-13 |
| 8. | 1368 | 1993-94 |
| 9. | 1368 | 1994-95 |
| 10. | 1349 | 1995-96 |

Fewest Rebounds: 956, 2008-09

Rebound Average

| | | |
|-----|------|---------|
| 1. | 51.1 | 1977-78 |
| 2. | 48.9 | 1980-81 |
| 2. | 48.9 | 1981-82 |
| 4. | 46.4 | 1978-79 |
| 5. | 45.1 | 1982-83 |
| 6. | 43.1 | 2012-13 |
| 7. | 42.8 | 1993-94 |
| 8. | 42.7 | 1979-80 |
| 9. | 41.5 | 1994-95 |
| 10. | 41.4 | 2013-14 |

Lowest Rebound Average: 33.0, 2008-09

Rebound Margin

| | | |
|-----|-------|---------|
| 1. | +14.8 | 1980-81 |
| 2. | +11.3 | 1981-82 |
| 3. | +8.8 | 2012-13 |
| 4. | +7.4 | 1994-95 |
| 5. | +5.7 | 2011-12 |
| 6. | +5.5 | 1993-94 |
| 7. | +5.3 | 1978-79 |
| 8. | +5.0 | 2013-14 |
| 9. | +4.7 | 1979-80 |
| 10. | +3.9 | 1982-83 |

Lowest Rebound Margin: -5.7, 1983-84, 2008-09

Assists

Total Assists

| | | |
|----|-----|---------|
| 1. | 739 | 1978-79 |
| 2. | 721 | 1980-81 |
| 3. | 648 | 2001-02 |
| 4. | 623 | 1981-82 |
| 5. | 600 | 1994-95 |
| 6. | 558 | 1995-96 |
| 7. | 557 | 1982-83 |

| | | |
|-----|-----|---------|
| 8. | 553 | 2000-01 |
| 9. | 533 | 1993-94 |
| 10. | 521 | 1979-80 |

Fewest Team Assists: 337, 2008-09

Assist Average

| | | |
|-----|------|---------|
| 1. | 21.8 | 1980-81 |
| 2. | 19.2 | 1982-83 |
| 3. | 19.1 | 2001-02 |
| 4. | 18.1 | 1994-95 |
| 5. | 17.9 | 1979-80 |
| 6. | 17.8 | 2000-01 |
| 7. | 17.5 | 1998-99 |
| 8. | 17.3 | 1981-82 |
| 9. | 17.1 | 1990-91 |
| 10. | 16.6 | 1993-94 |
| 10. | 16.6 | 1997-98 |

Lowest Assist Average: 11.1, 2011-12

Blocked Shots

Total Blocks

| | | |
|-----|-----|---------|
| 1. | 185 | 2007-08 |
| 2. | 162 | 2000-01 |
| 3. | 161 | 1980-81 |
| 4. | 143 | 2013-14 |
| 4. | 143 | 1981-82 |
| 6. | 136 | 1982-83 |
| 7. | 133 | 2012-13 |
| 8. | 129 | 2001-02 |
| 9. | 116 | 1998-99 |
| 10. | 115 | 2009-10 |

Fewest Team Blocks: 41, 1988-89

Steals

Total Steals

| | | |
|-----|-----|---------|
| 1. | 462 | 1979-80 |
| 2. | 385 | 1981-82 |
| 3. | 370 | 1992-93 |
| 4. | 357 | 1980-81 |
| 5. | 357 | 1994-95 |
| 6. | 355 | 1990-91 |
| 7. | 354 | 1987-88 |
| 8. | 347 | 1993-94 |
| 9. | 343 | 1985-86 |
| 10. | 331 | 1995-96 |

Fewest Team Steals: 165, 2005-06



Colorado set school records for scoring defense (54.5 ppg) and FG defense (.350) in 2012-13.



MISCELLANEOUS TEAM RECORDS

Most Points by CU

| RANK | POINTS | OPPONENT | DATE |
|------|--------|-------------------|----------|
| 1. | 134 | Fort Carson | 12/16/80 |
| 2. | 129 | N. Arizona | 1/21/80 |
| 3. | 116 | Idaho State | 2/13/82 |
| 4. | 114 | St. Francis (Pa.) | 11/28/94 |
| 5. | 112 | at N. Arizona | 2/14/80 |
| | 112 | Colorado State | 11/16/79 |
| 7. | 109 | Brigham Young | 1/29/82 |
| | 109 | Utah State | 3/1/80 |
| | 109 | Texas-El Paso | 2/10/79 |
| 10. | 108 | Pacific Christian | 11/18/81 |
| | 108 | at New Mexico St. | 2/7/80 |

Fewest Points By CU

| RANK | POINTS | OPPONENT | DATE |
|------|--------|-------------------|---------|
| 1. | 32 | at Texas | 1/17/09 |
| 2. | 36 | at Kansas State | 1/11/03 |
| | 36 | at UNLV | 1/13/78 |
| | 36 | Arizona | 2/24/75 |
| 5. | 37 | Northern Colo. | 1/28/75 |
| 6. | 38 | at New Mexico | 1/25/75 |
| 7. | 39 | at Utah | 1/28/77 |
| | 39 | at New Mexico St. | 1/27/75 |
| 9. | 40 | at Seton Hall | 12/9/08 |
| | 40 | at Baylor | 2/22/06 |
| | 40 | at Texas Tech | 1/17/98 |
| | 40 | at Texas | 2/23/05 |
| | 40 | Stanford | 1/14/13 |

Largest Margin of Victory

| RANK | POINTS | OPPONENT | DATE |
|------|--------|-------------------|----------|
| 1. | 101 | Fort Carson | 12/16/80 |
| 2. | 82 | N. Arizona | 1/21/80 |
| 3. | 73 | Utah State | 12/13/86 |
| 4. | 70 | New Mexico | 12/31/91 |
| 5. | 67 | Texas-El Paso | 2/10/79 |
| 6. | 65 | Pacific Christian | 11/18/81 |
| 7. | 64 | Colorado State | 11/16/79 |
| 8. | 63 | Utah State | 1/28/81 |
| 9. | 62 | St. Francis (Pa.) | 11/28/94 |
| 10. | 61 | Idaho State | 2/13/82 |

Largest Margin of Defeat

| RANK | POINTS | OPPONENT | DATE |
|------|--------|---------------|----------|
| 1. | 73 | UNLV | 1/9/76 |
| 2. | 67 | at UNLV | 1/13/78 |
| 3. | 62 | at Missouri | 3/6/84 |
| 4. | 48 | New S. Wales | 12/10/76 |
| 5. | 46 | at Baylor | 2/22/06 |
| | 46 | Texas Tech | 1/15/05 |
| 7. | 43 | at Texas | 2/23/05 |
| 8. | 42 | at Missouri | 2/1/84 |
| 9. | 41 | at Nebraska | 1/6/99 |
| 10. | 40 | at Texas Tech | 1/17/98 |
| | 40 | at Illinois | 1/4/98 |

Most First Half Points By CU

| RANK | POINTS | OPPONENT | DATE |
|------|--------|---------------------|----------|
| 1. | 68 | Fort Carson | 12/16/80 |
| 2. | 66 | N. Arizona | 1/21/80 |
| 3. | 63 | Colorado State | 11/16/79 |
| 4. | 61 | Sam Houston | 12/14/00 |
| 5. | 60 | at N. Arizona | 2/14/80 |
| 6. | 58 | Cal State-Fullerton | 11/18/05 |
| | 58 | St. Francis (Pa.) | 11/28/94 |
| | 58 | vs. Texas Christian | 12/7/93 |
| 9. | 57 | Idaho State | 2/13/82 |
| 10. | 56 | Brigham Young | 1/29/82 |

Fewest First Half Points By CU

| RANK | POINTS | OPPONENT | DATE |
|------|--------|------------------|----------|
| 1. | 9 | at Arizona State | 1/19/13 |
| 2. | 12 | at Texas | 1/17/09 |
| 3. | 13 | at Seton Hall | 12/9/08 |
| 4. | 14 | Stanford | 1/4/13 |
| | 14 | at Pacific | 12/18/04 |
| | 14 | at Missouri | 3/6/84 |
| 7. | 15 | Stanford | 1/14/12 |
| | 15 | at Baylor | 2/6/10 |
| | 15 | at Kansas State | 1/11/03 |
| | 15 | vs. Texas A&M | 3/7/07 |

Largest Halftime Lead For CU

| RANK | POINTS | OPPONENT | DATE |
|------|--------|-------------------|----------|
| 1. | 44 | Bowling Green | 11/23/01 |
| 2. | 42 | vs Southern Utah | 12/19/09 |
| | 42 | Colorado State | 11/16/79 |
| 4. | 38 | UC-Irvine | 12/30/94 |
| | 38 | vs. Kansas State | 3/7/92 |
| | 38 | New Mexico | 12/31/91 |
| 7. | 37 | Sam Houston | 12/14/00 |
| | 37 | Utah State | 12/13/86 |
| 9. | 36 | Long Beach St. | 12/19/94 |
| | 36 | St. Francis (Pa.) | 11/28/94 |

Largest Halftime Deficit For CU

| RANK | POINTS | OPPONENT | DATE |
|------|--------|-------------------|----------|
| 1. | 40 | Missouri | 3/6/84 |
| 2. | 37 | Utah | 12/5/83 |
| 3. | 33 | at Arizona State | 1/19/12 |
| 4. | 30 | at Seton Hall | 12/9/08 |
| 5. | 29 | at Kansas State | 1/14/06 |
| 6. | 28 | at Texas A&M | 1/8/11 |
| 7. | 27 | at Oklahoma State | 1/14/09 |
| | 27 | Minnesota | 11/23/03 |
| 9. | 26 | at Texas | 2/23/05 |
| | 26 | Stanford | 1/2/00 |

Most Second Half Points For CU

| RANK | POINTS | OPPONENT | DATE |
|------|--------|-------------------|----------|
| 1. | 66 | Fort Carson | 12/16/80 |
| 2. | 65 | N. Arizona | 12/18/93 |
| 3. | 63 | N. Arizona | 1/21/80 |
| 4. | 62 | Weber State | 2/23/80 |
| 5. | 60 | at New Mexico St. | 2/7/80 |
| 6. | 59 | at Oklahoma | 2/27/88 |
| | 59 | Idaho State | 2/13/82 |
| 8. | 58 | Adams State | 11/23/85 |
| | 58 | Pacific Christian | 11/18/81 |
| | 58 | Utah State | 1/28/81 |
| | 58 | at New Mexico St. | 2/16/80 |
| | 58 | Texas-El Paso | 2/10/79 |

Fewest Second Half points Scored By CU

| RANK | POINTS | OPPONENT | DATE |
|------|--------|-------------------|---------|
| 1. | 10 | at Texas Tech | 1/17/98 |
| 2. | 15 | vs. Texas | 3/13/03 |
| 3. | 16 | at Nebraska | 1/6/99 |
| 4. | 17 | at Iowa State | 2/19/11 |
| | 17 | at Iowa State | 3/6/10 |
| | 17 | at Kansas State | 3/1/00 |
| | 17 | UNLV | 1/12/84 |
| 8. | 18 | at Texas Tech | 1/26/08 |
| | 18 | at Texas | 2/23/05 |
| | 18 | at Texas A&M | 2/8/03 |
| | 18 | at Colorado State | 1/10/84 |
| | 18 | vs. Texas | 1/7/82 |
| | 18 | vs. California | 1/12/12 |
| | 18 | at California | 2/25/12 |

Most Points Scored By A CU Opponent

| RANK | POINTS | OPPONENT | DATE |
|------|--------|-------------------|----------|
| 1. | 121 | UNLV | 1/9/76 |
| 2. | 113 | at Missouri | 3/6/84 |
| 3. | 106 | at Stanford | 12/9/88 |
| | 106 | at Kansas State | 12/6/79 |
| 5. | 105 | at Missouri | 2/1/84 |
| 6. | 103 | at Iowa State | 2/2/05 |
| | 103 | at Long Beach St. | 3/19/88 |
| | 103 | at UNLV | 1/13/78 |
| | 103 | New S. Wales | 12/10/76 |
| 9. | 102 | vs. Oklahoma | 3/8/01 |

Fewest Points Scored By A CU Opponent

| RANK | POINTS | OPPONENT | DATE |
|------|--------|------------------|----------|
| 1. | 22 | New Mexico | 12/31/91 |
| 2. | 27 | vs. Kansas State | 3/7/92 |
| | 27 | Utah State | 12/13/86 |
| 4. | 29 | Texas Southern | 12/14/07 |
| | 29 | Iowa State | 2/19/93 |
| 6. | 32 | Valparaiso | 11/25/11 |
| 7. | 33 | Alcorn State | 11/15/13 |
| 7. | 33 | Kansas State | 1/8/93 |
| 9. | 34 | Loyola Chicago | 11/27/10 |
| | 34 | SW Missouri St. | 3/17/95 |

Most First Half Points By A CU Opponent

| RANK | POINTS | OPPONENT | DATE |
|------|--------|-------------------|---------|
| 1. | 61 | at Utah | 12/5/83 |
| 2. | 56 | at Kansas State | 1/14/06 |
| | 56 | vs. Kansas | 1/18/80 |
| 4. | 55 | Stanford | 1/12/14 |
| 5. | 54 | at Missouri | 3/6/84 |
| 6. | 53 | at Long Beach St. | 3/19/88 |
| 7. | 52 | at Nebraska | 1/6/99 |
| | 52 | at Brigham Young | 3/2/79 |
| | 52 | Weber State | 2/17/79 |
| 10. | 50 | at Oklahoma | 1/7/06 |
| | 50 | at Stanford | 12/9/88 |
| | 50 | at Missouri | 2/2/85 |
| | 50 | vs. Kansas State | 3/11/83 |
| | 50 | Utah State | 2/16/79 |

Fewest First Half Points By A CU Opponent

| RANK | POINTS | OPPONENT | DATE |
|------|--------|------------------|---------|
| 1. | 8 | vs. Kansas State | 3/7/92 |
| 2. | 10 | at Wyoming | 12/9/98 |

| | | | |
|----|------------|-------------------|----------|
| 10 | New Mexico | 12/31/91 | |
| 4. | 11 | vs. Southern Utah | 12/19/09 |
| | 11 | SW Missouri St. | 3/17/95 |
| 6. | 12 | Texas State | 12/1/10 |
| | 12 | Wyoming | 12/28/03 |
| | 12 | Kansas State | 2/23/02 |
| | 12 | Kansas | 1/29/02 |
| | 12 | vs. Iowa State | 3/5/97 |
| | 12 | N. Arizona | 2/7/81 |

Most 2nd Half Points Scored By An Opponent

| RANK | POINTS | OPPONENT | DATE |
|------|--------|--------------------|----------|
| 1. | 69 | vs. Oklahoma State | 3/6/89 |
| 2. | 60 | Southern Calif. | 12/21/02 |
| | 60 | at Kansas State | 12/6/79 |
| | 60 | vs. Weber State | 3/10/79 |
| 5. | 59 | vs. Drexel | 12/27/93 |
| | 59 | at Missouri | 3/6/84 |
| 7. | 58 | at Missouri | 2/1/84 |
| | 58 | at Weber State | 2/9/80 |
| 9. | 57 | vs. Oklahoma | 3/25/02 |
| | 57 | at Missouri | 1/17/83 |

Fewest 2nd Half Points Scored By An Opponent

| RANK | POINTS | OPPONENT | DATE |
|------|--------|------------------|----------|
| 1. | 9 | Utah State | 12/13/86 |
| 2. | 10 | at Arizona | 2/23/14 |
| 3. | 12 | UCLA | 2/28/14 |
| | 12 | New Mexico | 12/31/91 |
| 5. | 13 | Texas Southern | 12/14/07 |
| | 13 | Iowa State | 2/19/93 |
| | 13 | Utah State | 1/28/81 |
| 8. | 15 | Idaho State | 1/31/81 |
| 9. | 17 | Arizona State | 1/18/13 |
| | 17 | vs. Evansville | 12/7/02 |
| | 17 | Colorado College | 11/20/81 |



Two of Colorado's all-time best one-half defensive performances, in terms of points allowed, came in a one-week span in 2014.



SINGLE-GAME BESTS

Points Scored (30 or more)

- 38 Tracy Tripp at Oklahoma State, Feb. 4, 1987
- 38 Susan Horner vs. Weber State (AIAW) at Tucson, Ariz., Mar. 10, 1979
- 36 Brittany Spears vs. USC (WNIT), Mar. 27, 2011
- 36 Brittany Spears vs. UMass, Nov. 28, 2008
- 36 Jasmina Ilic vs. Nebraska, Jan. 4, 2006
- 35 Jenny Roulrier at Baylor, Feb. 23, 2000
- 35 Isabelle Fijalkowski vs. Georgia (NCAA) at Des Moines, Mar. 25, 1995
- 34 Brittany Spears at Missouri, Feb. 23, 2010
- 34 Jasmina Ilic vs. Cal State-Fullerton, Nov. 18, 2005
- 34 Jackie McFarland vs. Cal State-Fullerton, Nov. 18, 2005
- 34 Tera Bjorklund vs. North Carolina (NCAA), Mar. 24, 2003
- 34 Debbie Johnson vs. Oklahoma State, Feb. 25, 1990
- 33 Brittany Spears vs. California (WNIT), Mar. 21, 2011
- 33 Tera Bjorklund vs. Harvard, Nov. 22, 2003
- 33 Lisa Van Goor vs. Utah State, Jan. 11, 1983
- 33 Jean Raikes vs. Northern State, Dec. 29, 1977
- 33 Jean Raikes vs. Temple Junior College, Nov. 20, 1976
- 32 Jackie McFarland vs. Villanova (WNIT), Mar. 27, 2008
- 32 Jackie McFarland vs. Texas Tech, Mar. 6, 2007
- 32 Tera Bjorklund vs. Nebraska, Feb. 4, 2004
- 32 Tera Bjorklund vs. Oklahoma (Big 12) in Dallas, Mar. 12, 2003
- 32 Jamillah Lang vs. Nebraska (Big 8), Mar. 6, 1994
- 32 Jamillah Lang vs. Southern Illinois (NCAA), Mar. 18, 1992
- 32 Tracy Tripp at Kansas State, Feb. 11, 1987
- 32 Lisa Van Goor vs. Arizona State, Nov. 19, 1983
- 32 Lisa Van Goor at Colorado State, Dec. 20, 1980
- 31 Shelley Sheetz vs. Kansas, Jan. 10, 1993
- 31 Shelley Sheetz vs. Nebraska, Feb. 29, 1992
- 31 Gretchen DeWitte at Oklahoma, Feb. 18, 1987
- 30 Chucky Jeffery vs. Idaho, Dec. 4, 2011
- 30 Jackie McFarland vs. TCU (WNIT), Mar. 30, 2008
- 30 Jamillah Lang vs. Wichita State, Nov. 22, 1991
- 30 Debbie Johnson vs. Missouri-Kansas City, Dec. 6, 1989
- 30 Erin Carson at Nebraska, Neb., Jan. 23, 1985
- 30 Diane Hiemstra vs. Colorado State, Dec. 7, 1983
- 30 Debbie Descano at Brigham Young (AIAW), Mar. 7, 1980
- 30 Margie Sampson at Northern Colorado, Dec. 1, 1978

Field Goals Made (13 or more)

- 17 Tracy Tripp at Oklahoma State, Feb. 4, 1987
- 15 Jean Raikes vs. Temple Junior College, Nov. 20, 1976
- 14 Brittany Spears vs. California (WNIT), Mar. 21, 2011
- 14 Jackie McFarland vs. Cal State-Fullerton, Nov. 18, 2005
- 14 Jenny Roulrier at Baylor, Feb. 23, 2000
- 14 Jamillah Lang vs. Missouri, Jan. 16, 1994
- 14 Jamillah Lang vs. Southern Illinois (NCAA), Mar. 18, 1992



Jackie MacFarland

- 14 Diane Hiemstra at Oklahoma State, Jan. 21, 1984
- 14 Lisa Van Goor vs. Arizona State, Nov. 19, 1983
- 14 Diane Hiemstra vs. Colorado College, Feb. 16, 1983
- 14 Susan Horner vs. Weber State (AIAW) at Tucson, Ariz., Mar. 10, 1979
- 14 Jean Raikes at Northern State, Dec. 29, 1977
- 13 Jackie McFarland vs. Wyoming, Nov. 21, 2005
- 13 Tera Bjorklund vs. Texas (Big 12) in Dallas, Mar. 13, 2003
- 13 Tera Bjorklund vs. Oklahoma (Big 12) in Dallas, Mar. 12, 2003
- 13 Isabelle Fijalkowski vs. Georgia (NCAA) at Des Moines, Mar. 25, 1995
- 13 Debbie Johnson at Oklahoma, Jan. 16, 1991
- 13 Jamillah Lang vs. Wichita State, Nov. 22, 1991
- 13 Debbie Johnson vs. Kansas, Jan. 31, 1990
- 13 Debbie Johnson vs. Missouri-Kansas City, Dec. 6, 1989
- 13 Gretchen DeWitte at Oklahoma, Feb. 18, 1987
- 13 Tracy Tripp at Kansas State, Feb. 11, 1987
- 13 Diane Hiemstra vs. Colorado State, Dec. 7, 1983
- 13 Lisa Van Goor at Colorado State, Dec. 20, 1980
- 13 Margie Sampson at Northern Colorado, Dec. 1, 1978
- 13 Doni Fischer vs. Oklahoma State, Jan. 21, 1977

Free Throws Made (11 or more)

- 15 Jackie McFarland vs. Villanova (WNIT), Mar. 27, 2008 (15-16)
- 14 Jackie McFarland vs. Texas Tech, Mar. 6, 2007 (14-16)
- 14 Shelley Sheetz vs. Arkansas, Dec. 8, 1992 (14-16)
- 14 Debbie Descano vs. Montana State, Feb. 20, 1980 (14-16)
- 13 Arielle Roberson vs. Denver, Dec. 12, 2013 (13-17)
- 13 Jackie McFarland vs. TCU (WNIT), Mar. 30, 2008 (13-14)
- 13 Shelley Sheetz vs. Nebraska (Big 8) at Salina, Kan., Mar. 18, 1992 (13-16)
- 13 Gretchen DeWitte vs. Nebraska, Feb. 7, 1987 (13-13)
- 12 Jackie McFarland vs. Missouri, Mar. 5, 2008 (12-12)
- 12 Jasmina Ilic vs. Oklahoma, Jan. 20, 2007 (12-13)
- 12 Tera Bjorklund vs. North Carolina (NCAA), Mar. 24, 2003 (12-17)
- 12 Mandy Nightingale at New Mexico, Nov. 11, 2001 (12-13)
- 12 Mandy Nightingale vs. Florida, Dec. 22, 2000 (12-12)
- 12 Jenny Roulrier vs. Nebraska, Feb. 9, 2000 (12-13)
- 12 Erin Scholz vs. Auburn (NCAA), Mar. 17, 1996 (12-17)
- 12 Shelley Sheetz vs. Western Kentucky at Seattle, Wash., Dec. 27, 1991 (12-13)
- 12 Debbie Johnson vs. Oklahoma State, Feb. 25, 1990 (12-14)
- 12 Crystal Ford vs. Kansas, Jan. 20, 1988 (12-13)
- 12 Bridget Turner vs. Oklahoma, Jan. 27, 1987 (12-13)
- 11 Jackie McFarland at Creighton, Dec. 3, 2005 (11-16)
- 11 Tera Bjorklund vs. Rice, Nov. 22, 2002 (11-13)
- 11 Mandy Nightingale vs. Texas, Feb. 19, 2000 (11-14)
- 11 Shelley Sheetz vs. Kansas, Feb. 12, 1992 (11-11)
- 11 Mindy Henry vs. Utah at San Marcos, Texas, Dec. 7, 1991 (11-14)
- 11 Bridget Turner vs. UNLV (NCAA), Mar. 18, 1989 (11-17)
- 11 Ann Troyan vs. Wyoming, Dec. 1, 1980 (11-12)



Tracy Tripp



SINGLE-GAME BESTS

Rebounds (17 or more)

- 22 Lisa Van Goor vs. Weber State, Feb. 25, 1981
- 21 Raegan Scott at Texas, Feb. 26, 1997
- 20 Margie Sampson at Northern Colorado, Dec. 1, 1987
- 19 Erin Scholz vs. Southwest Missouri State (NCAA), Mar. 18, 1995
- 19 Lisa Van Goor vs. Utah, Dec. 10, 1980
- 18 Jackie McFarland at Kansas, Feb. 6, 2007
- 18 Erin Scholz vs. Oklahoma State, Jan. 30, 1994
- 18 Lisa Van Goor vs. Texas El Paso, Nov. 19, 1982
- 18 Gail Hook vs. Weber State, Mar. 14, 1982
- 18 Susan Horner vs. Wayne State at Chadron, Neb., Dec. 30, 1977
- 17 Arielle Roberson vs. Stanford, Mar. 7, 2014 (Pac-12)
- 17 Chucky Jeffery vs. Villanova, Mar. 22, 2012 (WNIT)
- 17 Erin Scholz vs. Oklahoma State, Jan. 6, 1995
- 17 Lisa Van Goor at Portland State, Dec. 20, 1982
- 17 Lisa Van Goor vs. Utah State, Feb. 10, 1982
- 17 Lisa Van Goor vs. Oklahoma City at Wichita, Kan., Jan. 9, 1982
- 17 Lisa Van Goor at Idaho State, Feb. 21, 1981
- 17 Linda Gehrke vs. at UNLV, Nev., Jan. 13, 1978

Steals (7 or more)

- 10 Annan Wilson vs. Utah, Jan. 7, 1989
- 9 De Celle Thomas vs. Iowa State (Big 8) at Salina, Kan., Mar. 4, 1995
- 9 Laurie Welch vs. New Mexico State, Feb. 4, 1982
- 9 Sandy Bean at Virginia, Jan. 7, 1980
- 8 Ellen Bain vs. Gonzaga, Nov. 23, 1990
- 8 Missy Kraai vs. Missouri, Feb. 7, 1990
- 8 Annan Wilson vs. Louisiana Tech, Jan. 3, 1989
- 8 Tracy Tripp at Nebraska, Feb. 1, 1986
- 8 Laurie Welch vs. Colorado State, Dec. 19, 1981
- 8 Ann Troyan vs. Colorado State, Nov. 16, 1979
- 7 Damietta Velicica vs. Tulane in Fairfield, Conn., Dec. 6, 1997
- 7 La Shena Graham at Missouri, Feb. 23, 1997
- 7 De Celle Thomas vs. Oklahoma, Feb. 27, 1994
- 7 Shelley Sheetz vs. Nebraska, Feb. 29, 1992
- 7 Amy Mathern at Oklahoma, Feb. 1, 1992
- 7 Annan Wilson at Nebraska, Feb. 3, 1990
- 7 Bridget Turner vs. Nebraska, Jan. 30, 1988
- 7 Ann Troyan at Duke, Jan. 5, 1980
- 7 Laurie Welch at Nebraska, Dec. 8, 1979
- 7 Sandy Bean vs. Weber State, Feb. 7, 1978

Assists (11 or more)

- 15 Whitney Law vs. Cal State-Fullerton, Nov. 18, 2005
- 14 La Shena Graham vs. Missouri, Feb. 25, 1998
- 14 Lori Mills vs. Brigham Young, Nov. 18, 1983
- 12 Ann Troyan vs. Northern Arizona, Jan. 21, 1980
- 12 Sandy Bean vs. Northern Colorado, Feb. 1, 1979
- 11 Shelley Sheetz vs. St. Francis (Pa.), Nov. 28, 1994
- 11 Tracy Tripp vs. Oklahoma State, Feb. 1, 1989
- 11 Bridget Turner vs. Illinois State, Nov. 26, 1988
- 11 Bridget Turner vs. Kansas, Feb. 19, 1986
- 11 Bridget Turner at Oregon, Dec. 28, 1986
- 11 Bridget Turner at Brigham Young, Jan. 8, 1986
- 11 Julie Hoehing vs. Weber State, Dec. 4, 1982
- 11 Ann Troyan at Idaho State, Feb. 1, 1980
- 11 Ann Troyan vs. Colorado State, Nov. 16, 1979
- 11 Doni Fischer at Northern Colorado, Jan. 27, 1978
- 11 Barb Heit vs. Peru State at Chadron, Neb., Dec. 29, 1977

Free Throw Percentage

(10 or more made, 90 percent or better)

- 1.000 (13-13) Gretchen DeWitte vs. Nebraska, Feb. 7, 1987
- 1.000 (12-12) Jackie McFarland vs. Missouri, Mar. 5, 2008
- 1.000 (12-12) Mandy Nightingale vs. Florida, Dec. 22, 2000
- 1.000 (11-11) Shelley Sheetz vs. Kansas, Feb. 12, 1992
- 1.000 (10-10) Caley Dow vs. Oregon, Dec. 30, 2005
- 1.000 (10-10) Randie Wirt at Missouri, Jan. 31, 2004
- 1.000 (10-10) Linda Lappe vs. Oklahoma, Feb. 16, 2003
- 1.000 (10-10) Erin Scholz vs. Oklahoma, Feb. 23, 1996

- .938 (15-16) Jackie McFarland vs. Villanova (WNIT), Mar. 27, 2008
- .929 (13-14) Jackie McFarland vs. TCU (WNIT), Mar. 30, 2008
- .923 (12-13) Jasmina Ilic vs. Oklahoma, Jan. 20, 2007
- .923 (12-13) Mandy Nightingale at New Mexico, Nov. 11, 2001
- .923 (12-13) Jenny Roulier vs. Nebraska, Feb. 9, 2000
- .923 (12-13) Shelley Sheetz vs. Western Kentucky in Seattle, Dec. 27, 1991
- .923 (12-13) Crystal Ford vs. Kansas, Jan. 20, 1988
- .923 (12-13) Bridget Turner vs. Oklahoma, Jan. 27, 1987
- .916 (11-12) Ann Troyan vs. Wyoming, Dec. 1, 1980
- .909 (10-11) Jackie McFarland vs. Texas Tech, Jan. 26, 2008
- .909 (10-11) Jackie McFarland vs. Siena, Nov. 23, 2007
- .909 (10-11) Whitney Law vs. Oklahoma State, Feb. 26, 2006; at Creighton, Dec. 3, 2005
- .909 (10-11) Tera Bjorklund vs. Nebraska, Feb. 4, 2004
- .909 (10-11) Erin Scholz vs. Baylor, Jan. 2, 1996
- .909 (10-11) Mindy Henry at Kansas State, Feb. 7, 1993
- .909 (10-11) Erin Carson at Missouri, Jan. 24, 1987
- .909 (10-11) Terri Jackson vs. Wyoming, Dec. 10, 1984
- .909 (10-11) Sandy Bean at Utah, March 1, 1979

Field Goal Percentage (Eight or more made)

- 1.000 (11-11) Tracy Tripp vs. Wyoming, Dec. 2, 1986
- 1.000 (10-10) Tera Bjorklund at Texas, Jan. 31, 2001
- 1.000 (9-9) Mitchell Irving at New Mexico State, Jan. 22, 1981
- 1.000 (8-8) LeaAnn Banks at Iowa State, Jan. 21, 1986
- 1.000 (8-8) Diane Hiemstra vs. Iowa State, Jan. 8, 1982
- 1.000 (8-8) Debbie Descano vs. Weber State, Feb. 23, 1980
- .910 (10-11) Debbie Descano vs. Colorado State, Nov. 16, 1979
- .900 (9-10) Chucky Jeffery vs. Denver, Dec. 8, 2011
- .900 (9-10) Jackie McFarland vs. Cal State Bakersfield, Dec. 28, 2007
- .900 (9-10) Diane Hiemstra vs. Utah State, Jan. 11, 1983
- .889 (8-9) Linda Lappe vs. American in Spokane, Dec. 4, 1998
- .889 (8-9) Melody Johnson vs. Rice, Nov. 30, 1997
- .889 (8-9) Erin Scholz vs. Tulane (NCAA), Mar. 15, 1996
- .889 (8-9) Lauri Weathers vs. St. Francis, Nov. 28, 1994
- .889 (8-9) Jamillah Lang vs. Gonzaga, Nov. 23, 1989
- .889 (8-9) Tracy Tripp at Kansas State, Feb. 17, 1988
- .889 (8-9) LeaAnn Banks vs. UCLA, Dec. 22, 1984
- .889 (8-9) LeaAnn Banks at Florida State, Nov. 23, 1984
- .889 (8-9) Debbie Descano vs. Winnipeg, Dec. 8, 1980



Tera Bjorklund



SEASON-BY-SEASON LEADERS

SCORING

| Year | Leader | Average |
|---------|----------------------|---------|
| 1974-75 | Lisa Magno | 10.5 |
| 1975-76 | Michell Irving | 10.0 |
| 1976-77 | Jean Raikes | 16.9 |
| 1977-78 | Lynda Gehrke | 14.0 |
| 1978-79 | Corky O'Rourke | 15.4 |
| 1979-80 | Debbie Descano | 16.7 |
| 1980-81 | Lisa Van Goor | 18.5 |
| 1981-82 | Lisa Van Goor | 18.8 |
| 1982-83 | Lisa Van Goor | 17.0 |
| 1983-84 | Diane Hiemstra | 17.6 |
| 1984-85 | Lisa Van Goor | 16.8 |
| 1985-86 | Erin Carson | 14.5 |
| 1986-87 | Tracy Tripp | 16.3 |
| 1987-88 | Bridget Turner | 14.8 |
| 1988-89 | Bridget Turner | 15.1 |
| 1989-90 | Debbie Johnson | 14.4 |
| 1990-91 | Debbie Johnson | 12.8 |
| 1991-92 | Jamillah Lang | 14.3 |
| 1992-93 | Shelley Sheetz | 15.7 |
| 1993-94 | Jamillah Lang | 19.2 |
| 1994-95 | Isabelle Fijalkowski | 16.1 |
| 1995-96 | Erin Scholz | 15.5 |
| 1996-97 | Erin Scholz | 13.3 |
| 1997-98 | La Shena Graham | 11.2 |
| 1998-99 | Linda Lappe | 10.7 |
| 1999-00 | Jenny Roulier | 14.9 |
| 2000-01 | Mandy Nightingale | 13.9 |
| 2001-02 | Mandy Nightingale | 12.9 |
| 2002-03 | Tera Bjorklund | 18.5 |
| 2003-04 | Tera Bjorklund | 18.1 |
| 2004-05 | Jackie McFarland | 10.0 |
| 2005-06 | Jackie McFarland | 17.2 |
| 2006-07 | Jackie McFarland | 17.8 |
| 2007-08 | Jackie McFarland | 18.7 |
| 2008-09 | Brittany Spears | 18.3 |
| 2009-10 | Brittany Spears | 17.7 |
| 2010-11 | Brittany Spears | 19.2 |
| 2011-12 | Chucky Jeffery | 15.5 |
| 2012-13 | Chucky Jeffery | 13.7 |
| 2013-14 | Arielle Roberson | 12.0 |

REBOUNDING

| Year | Leader | Average |
|---------|-------------------------------------|---------|
| 1974-76 | No record kept | |
| 1976-77 | Cathy Lanky | 11.8 |
| 1977-78 | Lynda Gehrke | 12.3 |
| 1978-79 | Susan Horner | 8.6 |
| 1979-80 | Sandy Bean | 7.9 |
| 1980-81 | Lisa Van Goor | 11.0 |
| 1981-82 | Lisa Van Goor | 10.1 |
| 1982-83 | Lisa Van Goor | 10.3 |
| 1983-84 | Patty Slighter | 7.1 |
| 1984-85 | LeaAnn Banks | 9.6 |
| 1985-86 | LeaAnn Banks | 9.8 |
| 1986-87 | Bridget Turner | 5.6 |
| 1987-88 | Crystal Ford | 6.0 |
| 1988-89 | Bridget Turner | 6.9 |
| 1989-90 | Debbie Johnson | 6.1 |
| 1990-91 | Debbie Johnson and Jamillah Lang | 5.2 |
| 1991-92 | Abby Wirfs | 6.1 |
| 1992-93 | Mindy Henry | 5.9 |
| 1993-94 | Erin Scholz | 8.7 |
| 1994-95 | Erin Scholz | 8.1 |
| 1995-96 | Erin Scholz | 8.0 |
| 1996-97 | Raegan Scott | 8.6 |
| 1997-98 | Garcia/Swagger/ Dilworth | 4.6 |

| | | |
|---------|------------------|------|
| 1998-99 | Britt Hartshorn | 5.5 |
| 1999-00 | Sabrina Scott | 8.0 |
| 2000-01 | Britt Hartshorn | 6.1 |
| 2001-02 | Sabrina Scott | 5.6 |
| 2002-03 | Sabrina Scott | 6.9 |
| 2003-04 | Randie Wirt | 7.7 |
| 2004-05 | Anna Nedovic | 6.5 |
| 2005-06 | Jackie McFarland | 9.2 |
| 2006-07 | Jackie McFarland | 10.8 |
| 2007-08 | Jackie McFarland | 8.2 |
| 2008-09 | Brittany Spears | 7.8 |
| 2009-10 | Brittany Spears | 7.8 |
| 2010-11 | Brittany Spears | 8.1 |
| 2011-12 | Chucky Jeffery | 8.0 |
| 2012-13 | Chucky Jeffery | 8.2 |
| 2013-14 | Arielle Roberson | 8.3 |

ASSISTS

| Year | Leader | Total |
|---------|-------------------------------|-------|
| 1974-77 | No record kept | |
| 1977-78 | Doni Fischer | 111 |
| 1978-79 | Corky O'Rourke | 93 |
| 1979-80 | Ann Troyan | 177 |
| 1980-81 | Sandy Bean | 123 |
| 1981-82 | Laurie Welch | 160 |
| 1982-83 | Kris Holwerda | 154 |
| 1983-84 | Lori Mills | 96 |
| 1984-85 | Kris Holwerda | 101 |
| 1985-86 | Bridget Turner | 167 |
| 1986-87 | Bridget Turner | 137 |
| 1987-88 | Bridget Turner | 166 |
| 1988-89 | Bridget Turner | 147 |
| 1989-90 | Annan Wilson | 131 |
| 1990-91 | Ellen Bain and Amy Mathern | 103 |
| 1991-92 | Shelley Sheetz | 142 |
| 1992-93 | Shelley Sheetz | 112 |
| 1993-94 | Shelley Sheetz | 128 |
| 1994-95 | Shelley Sheetz | 132 |
| 1995-96 | De Celle Thomas | 104 |
| 1996-97 | La Shena Graham | 122 |
| 1997-98 | La Shena Graham | 139 |
| 1998-99 | Linda Lappe | 110 |
| 1999-00 | Mandy Nightingale | 123 |
| 2000-01 | Mandy Nightingale | 121 |
| 2001-02 | Mandy Nightingale | 161 |
| 2002-03 | Sabrina Scott | 102 |
| 2003-04 | Kate Fagan | 84 |
| 2004-05 | Veronica Johns-Richardson | 85 |
| 2005-06 | Whitney Law | 102 |
| 2006-07 | Whitney Houston | 64 |
| 2007-08 | Susie Powers | 110 |
| 2008-09 | Alyssa Fressle | 99 |
| 2009-10 | Chucky Jeffery | 97 |
| 2010-11 | Chucky Jeffery | 128 |
| 2011-12 | Chucky Jeffery | 133 |
| 2012-13 | Chucky Jeffery | 123 |
| 2013-14 | Lexy Kresl | 95 |

STEALS

| Year | Leader | Total |
|---------|----------------|-------|
| 1974-78 | No record kept | |
| 1978-79 | Laurie Welch | 61 |
| 1979-80 | Ann Troyan | 101 |
| 1980-81 | Sandy Bean | 74 |
| 1981-82 | Laurie Welch | 120 |
| 1982-83 | Kris Holwerda | 67 |
| 1983-84 | Julie Hoehing | 58 |
| 1984-85 | LeaAnn Banks | 35 |
| 1985-86 | Bridget Turner | 75 |

| | | |
|---------|--------------------------------------|----|
| 1986-87 | Bridget Turner | 54 |
| 1987-88 | Bridget Turner | 91 |
| 1988-89 | Annan Wilson | 84 |
| 1989-90 | Annan Wilson | 91 |
| 1990-91 | Amy Mathern | 64 |
| 1991-92 | Shelley Sheetz | 74 |
| 1992-93 | Amy Mathern | 75 |
| 1993-94 | Shelley Sheetz | 83 |
| 1994-95 | Shelley Sheetz | 63 |
| 1995-96 | De Celle Thomas | 73 |
| 1996-97 | Raegan Scott | 56 |
| 1997-98 | La Shena Graham | 49 |
| 1998-99 | Linda Lappe and Chaquita Dilworth | 49 |
| 1999-00 | Jenny Roulier | 52 |
| 2000-01 | Mandy Nightingale | 53 |
| 2001-02 | Mandy Nightingale | 51 |
| 2002-03 | Maria Billingsley | 39 |
| 2003-04 | Randie Wirt | 47 |
| 2004-05 | Veronica Johns-Richardson | 59 |
| 2005-06 | Jackie McFarland | 35 |
| 2006-07 | Jackie McFarland | 37 |
| 2007-08 | Brittany Spears | 57 |
| 2008-09 | Brittany Spears | 55 |
| 2009-10 | Brittany Spears | 64 |
| 2010-11 | Chucky Jeffery | 76 |
| 2011-12 | Chucky Jeffery | 82 |
| 2012-13 | Chucky Jeffery | 67 |
| 2013-14 | Brittany Wilson | 42 |

FIELD GOAL PERCENTAGE

| Year | Leader | Percentage |
|---------|----------------------|------------|
| 1974-77 | No record kept | |
| 1977-78 | Cathy Lanky | .460 |
| 1978-79 | Sandy Bean | .533 |
| 1979-80 | Debbie Descano | .591 |
| 1980-81 | Debbie Descano | .610 |
| 1981-82 | Diane Hiemstra | .520 |
| 1982-83 | Kris Holwerda | .547 |
| 1983-84 | Nina Smith | .494 |
| 1984-85 | LeaAnn Banks | .543 |
| 1985-86 | LeaAnn Banks | .617 |
| 1986-87 | Crystal Ford | .529 |
| 1987-88 | Annan Wilson | .551 |
| 1988-89 | Crystal Ford | .524 |
| 1989-90 | Debbie Johnson | .518 |
| 1990-91 | Debbie Johnson | .506 |
| 1991-92 | Mindy Henry | .531 |
| 1992-93 | Mindy Henry | .601 |
| 1993-94 | De Celle Thomas | .488 |
| 1994-95 | Isabelle Fijalkowski | .595 |
| 1995-96 | Erin Scholz | .494 |
| 1996-97 | Raegan Scott | .466 |
| 1997-98 | Melody Johnson | .529 |
| 1998-99 | Kami Carmann | .483 |
| 1999-00 | Britt Hartshorn | .491 |
| 2000-01 | Britt Hartshorn | .548 |
| 2001-02 | Tera Bjorklund | .513 |
| 2002-03 | Tera Bjorklund | .539 |
| 2003-04 | Tera Bjorklund | .588 |
| 2004-05 | Kara Richards | .460 |
| 2005-06 | Jackie McFarland | .514 |
| 2006-07 | Jackie McFarland | .605 |
| 2007-08 | Jackie McFarland | .569 |
| 2008-09 | Kara Richards | .577 |
| 2009-10 | Chucky Jeffery | .455 |
| 2010-11 | Julie Seabrook | .483 |
| 2011-12 | Julie Seabrook | .488 |
| 2012-13 | Jamee Swan | .455 |
| 2013-14 | Jamee Swan | .505 |

FREE THROW PERCENTAGE

| Year | Leader | Percentage |
|---------|------------------|------------|
| 1974-75 | Lisa Magno | .691 |
| 1975-76 | Jill Harmon | .591 |
| 1976-77 | Bobbi Brown | .658 |
| 1977-78 | Doni Fischer | .738 |
| 1978-79 | Corky O'Rourke | .794 |
| 1979-80 | Betsy Bailey | .889 |
| 1980-81 | Debbie Descano | .810 |
| 1981-82 | Diane Hiemstra | .822 |
| 1982-83 | Diane Hiemstra | .821 |
| 1983-84 | Diane Hiemstra | .786 |
| 1984-85 | Erin Carson | .812 |
| 1985-86 | Erin Carson | .804 |
| 1986-87 | Erin Carson | .855 |
| 1987-88 | Tracy Tripp | .849 |
| 1988-89 | Gretchen DeWitte | .882 |
| 1989-90 | Missy Kraai | .810 |
| 1990-91 | Missy Kraai | .792 |
| 1991-92 | Shelley Sheetz | .836 |
| 1992-93 | Shelley Sheetz | .885 |
| 1993-94 | Shelley Sheetz | .770 |
| 1994-95 | Shelley Sheetz | .896 |
| 1995-96 | Amy Palmer | .852 |
| 1996-97 | La Shena Graham | .835 |
| 1997-98 | La Shena Graham | .855 |
| 1998-99 | Linda Lappe | .827 |
| 1999-00 | Jenny Roulier | .839 |
| 2000-01 | Linda Lappe | .859 |
| 2001-02 | Jenny Roulier | .898 |
| 2002-03 | Kate Fagan | .954 |
| 2003-04 | Kate Fagan | .887 |
| 2004-05 | Jackie McFarland | .708 |
| 2005-06 | Yari Escalera | .819 |
| 2006-07 | Jasmina Ilic | .865 |
| 2007-08 | Bianca Smith | .857 |
| 2008-09 | Bianca Smith | .788 |
| 2009-10 | Bianca Smith | .887 |
| 2010-11 | Brittany Spears | .830 |
| 2011-12 | Julie Seabrook | .750 |
| 2012-13 | Jen Reese | .806 |
| 2013-14 | Lexy Kresl | .841 |



Mandy Nightingale



DOUBLE DIGIT HISTORY

Career Double-Doubles

| | |
|-------------------------|-----------|
| Lisa Van Goor | 59 |
| Jackie McFarland | 46 |
| Erin Scholz | 36 |
| Brittany Spears | 31 |
| Chucky Jeffery | 30 |
| Sandy Bean | 22 |
| Britt Hartshorn | 19 |
| Sabrina Scott | 18 |
| a-Bridget Turner | 17 |
| LeaAnn Banks | 16 |
| Tera Bjorklund | 14 |
| Jamillah Lang | 11 |
| Raegan Scott | 11 |
| Arielle Roberson | 10 |
| Debbie Descano | 10 |
| Julie Hoehing | 10 |
| Gail Hook | 9 |
| Randie Wirt | 9 |
| Debbie Johnson | 8 |
| Anna Nedovic | 7 |
| Liz Brugger | 7 |
| Isabelle Fijalkowski | 6 |
| Kami Carmann | 6 |
| Susan Horner | 6 |
| Kara Richards | 5 |
| Aija Putnina | 5 |
| Abby Wirfs | 5 |
| Michell Irving | 5 |
| Mindy Henry | 5 |
| Sherrice King | 5 |
| Julie Seabrook | 4 |
| Crystal Ford | 4 |
| Linda Lappe | 4 |
| Patty Slighter | 4 |
| Jen Reese | 3 |
| Meagan Malcolm-Peck | 3 |
| Kim Kenyon | 3 |
| Shelley Garcia | 3 |
| Jamee Swan | 2 |
| Courtney Dunn | 2 |
| Jasmina Ilic | 2 |
| Lauren Lubin | 2 |
| Caley Dow | 2 |
| Alexandra Slokar | 2 |
| De Celle Thomas | 2 |
| b-Shelley Sheetz | 2 |
| Gretchen DeWitte | 2 |
| Laurie Weathers | 2 |
| Margie Sampson | 2 |
| Melody Johnson | 2 |
| Nina Smith | 2 |
| Whitney Law | 2 |
| Ashley Wilson | 1 |
| Jasmine Sborov | 1 |
| Rachel Hargis | 1 |
| Brittany Wilson | 1 |
| Amy Mathern | 1 |
| Betsy Bailey | 1 |
| Julie Abendroth | 1 |
| Kim Jackson | 1 |
| Kim Scheidt | 1 |
| Missy Kraai | 1 |
| Terri Jackson | 1 |
| Tracy Tripp | 1 |
| c-Annan Wilson | 1 |

KEY:
 a-10 pts/rebounds, 7 pts/assists
 b-both points/assists
 c-points/assists

Career Double-Digit Scoring Games (30 or more)

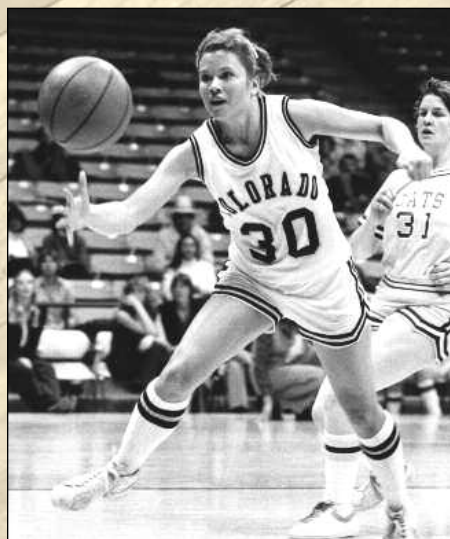
| Name | Seasons | Total |
|-------------------------|--------------|-----------|
| Brittany Spears | 2007-11 | 111 |
| Lisa Van Goor | 1980-85 | 108 |
| Jackie McFarland | 2004-08 | 102 |
| Tera Bjorklund | 2000-04 | 93 |
| Shelley Sheetz | 1991-95 | 92 |
| Chucky Jeffery | 2009-13 | 91 |
| Bridget Turner | 1985-89 | 91 |
| Erin Scholz | 1993-97 | 88 |
| Tracy Tripp | 1985-89 | 80 |
| Diane Hiemstra | 1981-84 | 80 |
| Erin Carson | 1984-88 | 76 |
| Mandy Nightingale | 1998-02 | 74 |
| Jenny Roulier | 1998-02 | 74 |
| Jamillah Lang | 1990-94 | 73 |
| Sandy Bean | 1978-82 | 72 |
| Britt Hartshorn | 1998-02 | 71 |
| Crystal Ford | 1985-89 | 61 |
| Brittany Wilson | 2010-14 | 56 |
| Kate Fagan | 1999-04 | 54 |
| Bianca Smith | 2006-10 | 52 |
| De Celle Thomas | 1992-96 | 52 |
| Jasmina Ilic | 2003-07 | 51 |
| Julie Hoehing | 1980-84 | 50 |
| Debbie Descano | 1979-81 | 50 |
| Corky O'Rourke | 1978-81 | 50 |
| Gretchen DeWitte | 1985-89 | 49 |
| Sabrina Scott | 1999-03 | 45 |
| La Shena Graham | 1995-98 | 45 |
| Arielle Roberson | 2012- | 42 |
| Jen Reese | 2012- | 40 |
| Debbie Johnson | 1989-91 | 38 |

| | | |
|---------------|---------|----|
| Kara Richards | 2004-09 | 37 |
| Linda Lappe | 1998-03 | 37 |
| Amy Palmer | 1992-96 | 36 |
| Laurie Welch | 1978-82 | 34 |
| Betsy Bailey | 1979-81 | 33 |
| LeaAnn Banks | 1984-86 | 32 |
| Gail Hook | 1979-82 | 31 |
| Eisha Bohman | 1998-02 | 30 |
| Sherrice King | 1989-93 | 30 |

Career Double-Digit Rebounding Games (10 or More)

| Name | Years | Total |
|-------------------------|----------------|-----------|
| Lisa Van Goor | 1980-85 | 63 |
| Jackie McFarland | 2004-08 | 48 |
| Erin Scholz | 1993-97 | 46 |
| Chucky Jeffery | 2009-13 | 32 |
| Brittany Spears | 2007-11 | 32 |
| LeaAnn Banks | 1984-86 | 29 |
| Sandy Bean | 1978-82 | 26 |
| Sabrina Scott | 1999-03 | 23 |
| Britt Hartshorn | 1998-02 | 21 |
| Julie Hoehing | 1980-84 | 17 |
| Raegan Scott | 1993-97 | 16 |
| Tera Bjorklund | 2000-04 | 15 |
| Randie Wirt | 2000-04 | 15 |
| Arielle Roberson | 2013-14 | 14 |
| Aija Putnina | 2006-08 | 13 |
| Gail Hook | 1979-82 | 12 |
| Kara Richards | 2004-09 | 11 |
| Jamillah Lang | 1991-94 | 11 |
| Mindy Henry | 1989-93 | 10 |
| Bridget Turner | 1985-89 | 10 |
| Debbie Descano | 1979-81 | 10 |

Triple-Doubles



Sandy Bean
 Feb 16, 1979 vs. Utah State
 19 points, 11 rebounds, 10 assists



Chucky Jeffery
 Nov. 27, 2010 vs. Loyola Chicago
 10 points, 13 rebounds, 10 assists
 Mar. 25, 2012 at Oklahoma State (WNIT)
 12 points, 12 rebounds, 10 assists



DOUBLE DIGIT HISTORY

Single Season Double-Doubles (Five or more)

| Name | Season | Total |
|-------------------------|----------------|----------|
| Lisa Van Goor | 1980-81 | 20 |
| Lisa Van Goor | 1981-82 | 19 |
| Jackie McFarland | 2006-07 | 18 |
| Lisa Van Goor | 1982-83 | 17 |
| Jackie McFarland | 2005-06 | 14 |
| Erin Scholz | 1995-96 | 12 |
| Chucky Jeffery | 2012-13 | 10 |
| Chucky Jeffery | 2011-12 | 10 |
| Chucky Jeffery | 2010-11 | 9 |
| Brittany Spears | 2010-11 | 9 |
| Erin Scholz | 1993-94 | 9 |
| Jackie McFarland | 2007-08 | 9 |
| Britt Hartshorn | 1999-00 | 9 |
| Sabrina Scott | 1999-00 | 9 |
| LeaAnn Banks | 1984-85 | 9 |
| Brittany Spears | 2008-09 | 8 |
| Erin Scholz | 1996-97 | 8 |
| Arielle Roberson | 2013-14 | 7 |
| Brittany Spears | 2009-10 | 7 |
| Brittany Spears | 2007-08 | 7 |
| Randie Wirt | 2003-04 | 7 |
| Raegan Scott | 1996-97 | 7 |
| Erin Scholz | 1994-95 | 7 |
| Jamillah Lang | 1993-94 | 7 |
| LeaAnn Banks | 1985-86 | 7 |
| Julie Hoehing | 1982-83 | 7 |
| Sandy Bean | 1981-82 | 7 |
| Debbie Descano | 1979-80 | 7 |
| Liz Brugger | 1979-80 | 7 |
| Britt Hartshorn | 2000-01 | 6 |
| Isabelle Fijalkowski | 1994-95 | 6 |
| Julie Hoehing | 1983-84 | 6 |
| Gail Hook | 1981-82 | 6 |
| Sandy Bean | 1980-81 | 6 |
| Susan Horner | 1978-79 | 6 |
| Aija Putnina | 2007-08 | 5 |
| Jackie McFarland | 2004-05 | 5 |
| Tera Bjorklund | 2003-04 | 5 |
| Tera Bjorklund | 2002-03 | 5 |
| Debbie Johnson | 1989-90 | 5 |
| Bridget Turner | 1988-89 | 5 |
| Sandy Bean | 1978-79 | 5 |

Single Season Double-Figure Rebounding Games (10 or more)

| Name | Season | Total |
|-------------------------|----------------|-----------|
| Lisa Van Goor | 1981-82 | 21 |
| Lisa Van Goor | 1980-81 | 20 |
| Jackie McFarland | 2006-07 | 19 |
| Lisa Van Goor | 1982-83 | 19 |
| LeaAnn Banks | 1985-86 | 17 |
| Jackie McFarland | 2005-06 | 14 |
| Erin Scholz | 1993-94 | 13 |
| Erin Scholz | 1995-96 | 12 |
| Erin Scholz | 1994-95 | 12 |
| LeaAnn Banks | 1984-85 | 12 |
| Chucky Jeffery | 2012-13 | 11 |
| Arielle Roberson | 2013-14 | 10 |
| Chucky Jeffery | 2011-12 | 10 |
| Chucky Jeffery | 2010-11 | 10 |
| Jackie McFarland | 2007-08 | 10 |
| Raegan Scott | 1996-97 | 10 |
| Britt Hartshorn | 1999-00 | 10 |
| Sabrina Scott | 1999-00 | 10 |
| Sandy Bean | 1981-82 | 10 |

Single Season Double-Figure Scoring Games (20 or more)

| Name | Season | Total |
|----------------------|---------|-------|
| Lisa Van Goor | 1981-82 | 34 |
| Brittany Spears | 2010-11 | 32 |
| Jackie McFarland | 2007-08 | 32 |
| Lisa Van Goor | 1980-81 | 32 |
| Tera Bjorklund | 2002-03 | 31 |
| Chucky Jeffery | 2011-12 | 30 |
| Erin Scholz | 1995-96 | 29 |
| Jamillah Lang | 1993-94 | 29 |
| Jackie McFarland | 2006-07 | 28 |
| Jackie McFarland | 2005-06 | 28 |
| Bridget Turner | 1988-89 | 28 |
| Diane Hiemstra | 1983-84 | 28 |
| Brittany Spears | 2008-09 | 27 |
| Brittany Spears | 2007-08 | 27 |
| Tera Bjorklund | 2003-04 | 27 |
| Isabelle Fijalkowski | 1994-95 | 27 |
| Shelley Sheetz | 1994-95 | 27 |

| | | |
|-------------------------|----------------|-----------|
| Bridget Turner | 1987-88 | 27 |
| Diane Hiemstra | 1982-83 | 27 |
| Lisa Van Goor | 1982-83 | 27 |
| Corky O'Rourke | 1978-79 | 27 |
| Debbie Descano | 1980-81 | 26 |
| Chucky Jeffery | 2012-13 | 25 |
| Brittany Spears | 2009-10 | 25 |
| Mandy Nightingale | 2001-02 | 25 |
| La Shena Graham | 1996-97 | 25 |
| Diane Hiemstra | 1981-82 | 25 |
| Kate Fagan | 2003-04 | 24 |
| Chucky Jeffery | 2010-11 | 24 |
| Mandy Nightingale | 2000-01 | 24 |
| Britt Hartshorn | 1999-00 | 24 |
| Jenny Roulier | 1999-00 | 24 |
| Shelley Sheetz | 1992-93 | 24 |
| Crystal Ford | 1988-89 | 24 |
| Tracy Tripp | 1986-87 | 24 |
| Gail Hook | 1981-82 | 24 |
| Debbie Descano | 1979-80 | 24 |
| Arielle Roberson | 2012-13 | 23 |
| Erin Carson | 1984-85 | 23 |
| Bianca Smith | 2009-10 | 22 |
| Kate Fagan | 2002-03 | 22 |
| Tera Bjorklund | 2001-02 | 22 |
| Britt Hartshorn | 2000-01 | 22 |
| Erin Scholz | 1996-97 | 22 |
| Gretchen DeWitte | 1986-87 | 22 |
| Sandy Bean | 1979-80 | 22 |
| Susan Horner | 1978-79 | 22 |
| Jenny Roulier | 2000-01 | 21 |
| Shelley Sheetz | 1991-92 | 21 |
| Tracy Tripp | 1985-86 | 21 |
| Kara Richards | 2008-09 | 20 |
| De Celle Thomas | 1995-96 | 20 |
| Erin Scholz | 1993-94 | 20 |
| Shelley Sheetz | 1993-94 | 20 |
| Mindy Henry | 1992-93 | 20 |
| Debbie Johnson | 1990-91 | 20 |
| Erin Carson | 1987-88 | 20 |
| Crystal Ford | 1987-88 | 20 |
| Jean Raikes | 1978-79 | 20 |

1,000 POINTS, 1,000 REBOUNDS

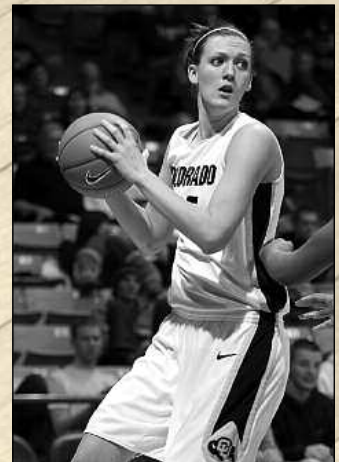
Only three players in CU history have recorded 1,000 career rebounds, coincidentally all three are 1,000 point scorers making this 1,000-1,000 double club an exclusive list. Lisa Van Goor (1980-85) ranks first in rebounding with 1,145, and second in scoring at 2,067. Erin Scholz is CU's second-best career rebounder with 1,067 and is seventh in career scoring with 1,621 points from 1993-97. Jackie McFarland is CU's third all-time rebounder with 1,049 and scorer with 1,957 points from 2004-08.



Lisa Van Goor



Erin Scholz



Jackie McFarland



MISCELLANEOUS CHARTS

CU in Overtime Games

| Season | Opponent (rank) | Score at end of Regulation | Result |
|----------------|------------------------|----------------------------|---------|
| Feb. 14, 1976 | at Arizona | 58-58 | L 67-70 |
| Dec. 3, 1977 | at St. Mary's | | W 79-76 |
| Feb. 4, 1978 | at New Mexico State | | W 59-57 |
| Jan. 21, 1982 | at Utah State | 70-70 | W 83-74 |
| Dec. 30, 1986 | at Minnesota | 64-64 | L 75-76 |
| Jan. 7, 1987 | at Fresno State | 62-62 | L 69-70 |
| Feb. 11, 1987 | at Kansas State | 67-67 | L 78-85 |
| Feb. 20, 1988 | at Nebraska | 63-63 | L 73-85 |
| Feb. 27, 1988 | at Oklahoma | 78-78 | W 91-88 |
| Dec. 11, 1988 | at Arizona | 63-63 | L 69-75 |
| Mar. 6, 1989 | vs. Oklahoma State | 83-83/90-90 | W 98-92 |
| Jan. 1, 1991 | at Arizona | 62-62 | W 75-69 |
| Jan. 23, 1991 | Missouri | 69-69 | W 74-71 |
| Dec. 27, 1991 | Western Kentucky (11) | 59-59 | W 71-68 |
| Jan. 6, 1992 | at Texas A&M | 56-56 | L 60-69 |
| Mar. 18, 1992 | Southern Illinois | 69-69 | L 80-84 |
| Mar. 7, 1993 | vs. Kansas | 62-62/72-72 | L 78-81 |
| Dec. 20, 1993 | at Tennessee (1) | 68-68 | L 82-86 |
| Jan. 30, 1994 | at Oklahoma State | 63-63 | L 73-75 |
| Mar. 7, 1994 | vs. Missouri | 62-62 | L 79-91 |
| Feb. 24, 1995 | at Kansas (23) | 73-73 | W 90-81 |
| Nov. 17, 1995 | Utah | 55-55 | W 63-61 |
| Feb. 14, 1996 | at Nebraska | 64-64/70-70 | L 75-83 |
| Mar. 17, 1996* | Auburn (19) | 57-57 | L 61-68 |
| Jan. 18, 1997 | at Iowa State | 53-53/62-62 | W 68-66 |
| Feb. 27, 1999 | at Texas A&M | 58-58 | W 71-69 |
| Feb. 23, 2000 | at Baylor | 79-79 | L 90-91 |
| Feb. 3, 2002 | at Texas Tech (13) | 63-63 | W 74-69 |
| Dec. 31, 2002 | at Syracuse | 65-65 | W 78-75 |
| Nov. 15, 2003 | Notre Dame (15) | 55-55 | W 67-63 |
| Dec. 21, 2004 | at Washington | 67-67 | W 76-74 |
| Jan. 22, 2005 | at Oklahoma State | 63-63 | L 70-76 |
| Nov. 25, 2005 | vs. Northern Iowa | 58-58 | L 65-74 |
| Dec. 19, 2005 | vs. Northern Arizona | 76-76 | L 83-84 |
| Feb. 6, 2007 | at Kansas | 62-62 | L 68-70 |
| Jan. 13, 2008 | vs. Iowa State | 61-61/69-69 | L 77-84 |
| Mar. 30, 2008^ | vs. TCU | 76-76 | W 96-90 |
| Feb. 23, 2010 | at Missouri | 74-74 | W 80-79 |
| Jan. 15, 2011 | vs. Iowa State (17/16) | 57-57 | W 66-60 |
| Jan. 29, 2012 | vs. UCLA | 46-46 | L 54-62 |
| Feb. 18, 2012 | vs. Utah | 50-50 | L 56-61 |
| Mar. 3, 2013 | at Oregon State | 56-56 | W 66-63 |
| Feb. 23, 2014 | at Arizona | 49-49 | W 61-56 |

21-22 All Time In Overtime, 2-3 in Double Overtime
(Home: 7-5, Road: 13-14, Neutral: 1-3)

*-NCAA Second Round; ^-WNIT Fourth Round



Chelsea Dale and CU knocks off No. 17/16 Iowa State 66-60 in overtime on Jan. 15, 2011.

100-Point Games

| Date | Opponent | Site |
|---------------|--------------|-----------------------------|
| Dec. 16, 1980 | Colorado 134 | Fort Carson 33 |
| Jan. 21, 1980 | Colorado 129 | Northern Arizona 47 |
| Feb. 13, 1982 | Colorado 116 | Idaho State 55 |
| Nov. 28, 1994 | Colorado 114 | St. Francis (Pa.) 52 |
| Nov. 16, 1979 | Colorado 112 | Colorado State 48 |
| Feb. 14, 1980 | Colorado 112 | Northern Arizona 76 |
| Feb. 10, 1979 | Colorado 109 | Texas El Paso 42 |
| Mar. 1, 1980 | Colorado 109 | Utah State 89 |
| Jan. 29, 1982 | Colorado 109 | Brigham Young 75 |
| Feb. 7, 1980 | Colorado 108 | New Mexico State 82 |
| Nov. 18, 1981 | Colorado 108 | Pacific Christian 43 |
| Jan. 14, 1978 | Colorado 107 | Redlands 49 |
| Feb. 2, 1980 | Colorado 107 | Utah State 90 |
| Nov. 18, 1980 | Colorado 107 | Colorado Women's College 73 |
| Feb. 16, 1980 | Colorado 106 | New Mexico State 75 |
| Nov. 23, 1985 | Colorado 106 | Adams State 54 |
| Jan. 26, 1979 | Colorado 103 | Northern Arizona 69 |
| Dec. 29, 1979 | Colorado 103 | Colorado Women's College 52 |
| Feb. 23, 1980 | Colorado 103 | Weber State 72 |
| Jan. 28, 1981 | Colorado 103 | Utah State 40 |
| Dec. 9, 1987 | Colorado 103 | Arizona State 63 |
| Feb. 16, 1979 | Colorado 101 | Utah State 96 |
| Feb. 24, 1988 | Colorado 101 | Missouri 88 |
| Dec. 7, 1993 | Colorado 101 | Texas Christian 56 |
| Nov. 29, 1982 | Colorado 100 | Adams State 58 |
| Dec. 13, 1986 | Colorado 100 | Utah State 27 |
| Nov. 18, 2005 | Colorado 100 | Cal State-Fullerton 71 |

Largest Margin of Victory

- 101, Colorado (134) vs. Fort Carson (33) at Boulder, Dec. 16, 1980
- 82, Colorado (129) vs. Northern Arizona (47) at Boulder, Jan. 21, 1980
- 73, Colorado (100) vs. Utah State (27) at Boulder, Dec. 13, 1986
- 70, Colorado (92) vs. New Mexico (22) at Boulder, Dec. 31, 1991
- 67, Colorado (109) vs. Texas-El Paso (42) at Boulder, Feb. 10, 1979
- 65, Colorado (108) vs. Pacific Christian (65) at Boulder, Nov. 18, 1981
- 64, Colorado (112) vs. Colorado State (48) at Boulder, Nov. 16, 1979
- 63, Colorado (103) vs. Utah State (40) at Boulder, Jan. 29, 1981
- 62, Colorado (114) vs. St. Francis (Pa.) (52) at Boulder, Nov. 28, 1994
- 61, Colorado (116) vs. Idaho State (55) at Boulder, Feb. 13, 1982
- 58, Colorado (97) vs. Colorado College (39) at Boulder, Nov. 20, 1981
- 58, Colorado (107) vs. Redlands (49) at Redlands, Calif., Jan. 14, 1978
- 57, Colorado (94) vs. Idaho State (37) at Boulder, Jan. 31, 1981
- 53, Colorado (88) vs. Peru State (35) at Chadron, Neb., Dec. 28, 1977
- 52, Colorado (88) vs. Southern Utah (36) at Boulder, Dec. 19, 2009
- 52, Colorado (106) vs. Adams State (54) at Boulder, Nov. 23, 1985
- 52, Colorado (94) vs. Idaho State (42) at Boulder, Feb. 29, 1980
- 52, Colorado (89) vs. Fort Hays State (37) at Boulder, Jan. 5, 1983
- 52, Colorado (79) vs. Kansas State (27) at Salina, Kansas, Mar. 7, 1992
- 51, Colorado (98) vs. Buffalo (47) at Boulder, Jan. 3, 2004

Colorado's Record by Margin of Victory

Colorado's record when the result of a game was...

| | | | | | |
|---------------|----------------|---------------|--------------|-----------------|-------------|
| By one point: | 20-17 (.541) | 36-40 Points: | 22-7 (.759) | 76-80 Points: | 0-0 (---) |
| 2-5 Points: | 102-100 (.505) | 41-45 Points: | 17-3 (.850) | 81-85 Points: | 1-0 (1.000) |
| 6-10 Points: | 120-112 (.517) | 46-50 Points: | 8-3 (.727) | 86-90 Points: | 0-0 (---) |
| 11-15 Points: | 134-87 (.606) | 51-55 Points: | 10-0 (1.000) | 91-95 Points: | 0-0 (---) |
| 16-20 Points: | 111-66 (.627) | 56-60 Points: | 3-0 (1.000) | 96-100 Points: | 0-0 (---) |
| 21-25 Points: | 72-36 (.667) | 61-65 Points: | 5-1 (.833) | 101-105 Points: | 1-0 (1.000) |
| 26-30 Points: | 57-21 (.731) | 66-70 Points: | 3-0 (1.000) | | |
| 31-35 Points: | 42-14 (.750) | 71-75 Points: | 1-1 (.500) | | |

NCAA TOURNAMENT RECORDS



COLORADO INDIVIDUAL RECORDS

| | |
|--|--|
| Field Goals: | 14, Jamillah Lang vs. Southern Illinois, Mar. 18, 1992 |
| Field Goals Attempted: | 27, Jamillah Lang vs. Southern Illinois, Mar. 18, 1992 |
| Field Goal Percentage: | .813 (13-16), Isabelle Fijalkowski vs. Georgia, Mar. 25, 1995 |
| Three-Point Field Goals: | 6, Kate Fagan vs. BYU, Mar. 22, 2003 |
| Three-Point Field Goals Attempted: | 12, Mandy Nightingale vs. LSU, Mar. 17, 2002 |
| Three-Point Field Goal Percentage (min. 4 made): | .800 (4-5), Amy Palmer vs. Holy Cross, Mar. 16, 1995 (4-5), La Shena Graham vs. Stephen F. Austin, Mar. 16, 1997 (4-5), Sabrina Scott vs. BYU, Mar. 22, 2003 |
| Free Throws: | 12, Erin Scholz vs. Auburn, Mar. 17, 1996; Tera Bjorklund vs. North Carolina, Mar. 24, 2003 |
| Free Throws Attempted: | 17, Bridget Turner vs. UNLV, Mar. 18, 1989; Erin Scholz vs. Auburn, Mar. 17, 1996; Tera Bjorklund vs. UNC, Mar. 24, 2003 |
| Free Throw Percentage: | 1.000 (9-9), Tera Bjorklund vs. Stanford, Mar. 23, 2002 |
| Offensive Rebounds: | 10, Crystal Ford vs. Eastern Illinois, Mar. 16, 1988 |
| Defensive Rebounds: | 16, Erin Scholz vs. Southwest Missouri State, Mar. 17, 1995 |
| Total Rebounds: | 19 (30/16d), Erin Scholz vs. Southwest Missouri State, Mar. 17, 1995 |
| Points: | 35, Isabelle Fijalkowski vs. Georgia, Mar. 25, 1995 |
| Assists: | 8 (by four players), most recent Amy Palmer vs. Oregon, Mar. 19, 1994 |
| Blocks: | 5, Tera Bjorklund vs. LSU, Mar. 17, 2002, vs. BYU, Mar. 22, 2003 |
| Steals: | 6, Bridget Turner vs. UNLV, Mar. 18, 1989 |

COLORADO TEAM RECORDS

| | |
|------------------------------------|---|
| Field Goals: | 38 vs. Siena, Mar. 17, 2001 |
| Field Goals Attempted: | 75 vs. Marquette, Mar. 16, 1994 |
| Field Goal Percentage: | .633 (38-60) vs. Siena, Mar. 17, 2001 |
| Three-Point Field Goals: | 12 vs. BYU, March 22, 2003 |
| Three-Point Field Goals Attempted: | 22 vs. LSU, Mar. 17, 2002 |
| Three-Point Field Goal Percentage: | .727 (8-11) vs. Southern, Mar. 15, 2002 |
| Free Throws: | 31 vs. UNLV, Mar. 18, 1989, vs. North Carolina, Mar. 24, 2003 |
| Free Throws Attempted: | 39 vs. UNLV, Mar. 18, 1989; vs. North Carolina, Mar. 24, 2003 |
| Free Throw Percentage: | .895 (17-19) vs. Oregon, Mar. 19, 1994, vs. Stanford, Mar. 23, 2002 |
| Offensive Rebounds: | 29 vs. Eastern Illinois, Mar. 16, 1988 |
| Defensive Rebounds: | 40 vs. Southwest Missouri State, Mar. 18, 1995 |
| Rebounds: | 60 (270/33d) vs. Marquette, Mar. 16, 1994 |
| Fouls: | 26 vs. UNLV, Mar. 18, 1989 |
| Points: | 98 vs. Siena, Mar. 17, 2001 |
| Assists: | 26 vs. Oregon, Mar. 19, 1994; vs. Southern, Mar. 15, 2002 |
| Fewest Turnovers: | 6 vs. Holy Cross, Mar. 16, 1995; vs. Villanova, Mar. 29, 2003 |
| Blocks: | 11 vs. Southern, Mar. 15, 2002 |
| Steals: | 13, Kansas, Mar. 23, 2013 |
| Fewest Field Goals Made: | 12, at UC Santa Barbara, Mar. 20, 2004 |
| Fewest Field Goals Attempted: | 47 vs. North Carolina, Mar. 24, 2003 |
| Lowest Field Goal Percentage: | .254 (16-63), Kansas, Mar. 23, 2013 |
| Fewest Free Throws: | 4 vs. Vanderbilt, Mar. 19, 2001 |
| Fewest Free Throws Attempted: | 4 vs. Vanderbilt, Mar. 19, 2001 |
| Lowest Free Throw Percentage: | .579 (22-38) vs. Tulane, Mar. 15, 1996 |
| Fewest Rebounds: | 24 vs. Vanderbilt, Mar. 19, 2001 |
| Fewest Fouls: | 9 vs. Holy Cross, Mar. 16, 1995 |
| Fewest Points: | 49 at UC Santa Barbara, Mar. 20, 2004 |
| Fewest Assists: | 5 at UC Santa Barbara, Mar. 20, 2004, vs. Oklahoma, Mar. 25, 2002 |
| Most Turnovers: | 29 vs. Oklahoma, Mar. 25, 2002 |
| Fewest Blocks: | 0 (three times), most recent vs. Oklahoma, Mar. 25, 2002 |
| Fewest Steals: | 2 (four times), most recent vs. LSU, Mar. 17, 2002 |

OPPONENT INDIVIDUAL RECORDS

| | |
|--|--|
| Field Goals: | 13, Anita Kaplan, Stanford, Mar. 24, 1994 |
| Field Goals Attempted: | 27, Jacklyn Winfield, Southern, Mar. 15, 2002 |
| Field Goal Percentage: | 1.000 (6-6), Dana Wilkerson, Long Beach State, Mar. 19, 1988 |
| Three-Point Field Goals: | 5 (by five players), most recent Katie Davis, Villanova, Mar. 29, 2003 |
| Three-Point Field Goals Attempted: | 10 (twice), most recent Kristen Maskala, Marquette, Mar. 16, 1994 |
| Three-Point Field Goal Percentage (min. 4 made): | .714 (5-7) (twice), most recent LaNeishea Cauffield, Oklahoma, Mar. 25, 2002 |
| Free Throws: | 15, Sheryl Swoopes, Texas Tech, Mar. 27, 1993 |
| Free Throws Attempted: | 16, Sheryl Swoopes, Texas Tech, Mar. 27, 1993 |
| Free Throw Percentage: | .938 (15-16), Sheryl Swoopes, Texas Tech, Mar. 27, 1993 |
| Offensive Rebounds: | 7, Ann Brown, Eastern Illinois, Mar. 16, 1988 |
| Defensive Rebounds: | 13, Pauline Jordan, UNLV, Mar. 18, 1989 |
| Total Rebounds: | 17, Pauline Jordan, UNLV, Mar. 18, 1989 |
| Points: | 36, Sheryl Swoopes, Texas Tech, Mar. 27, 1993 |
| Assists: | 10, Lori Goerlitz, Marquette, Mar. 16, 1994 |
| Blocks: | 11, Pauline Jordan, UNLV, Mar. 18, 1989 |
| Steals: | 6, Barb Perkes, Eastern Illinois, Mar. 16, 1988; Sheryl Swoopes, Texas Tech, Mar. 27, 1993 |

OPPONENT TEAM RECORDS

| | |
|--|---|
| Field Goals: | 43, Eastern Illinois, Mar. 16, 1988 |
| Field Goals Attempted: | 79, Marquette, Mar. 16, 1994 |
| Field Goal Percentage: | .573 (43-75), Long Beach State, Mar. 29, 1988 |
| Three-Point Field Goals: | 10, Siena, Mar. 17, 2001 |
| Three-Point Field Goals Attempted: | 28, Marquette, Mar. 16, 1994 |
| Three-Point Field Goal Percentage (min. 4 made): | .500 (10-20), Siena, Mar. 17, 2001 |
| Free Throws: | 24, at UC Santa Barbara, Mar. 20, 2004, UNLV, Mar. 18, 1989 |
| Free Throws Attempted: | 30, UNLV, Mar. 18, 1989 |
| Free Throw Percentage: | 1.000 (6-6), Kansas, Mar. 23, 2013 |
| Offensive Rebounds: | 28, Eastern Illinois, Mar. 16, 1988 |
| Defensive Rebounds: | 33, Kansas, Mar. 23, 2013 |
| Rebounds: | 49, Marquette, Mar. 16, 1994; North Carolina, Mar. 24, 2003 |
| Fouls: | 29, Stanford, Mar. 25, 1993 |
| Points: | 103, Long Beach State, Mar. 19, 1988 |
| Assists: | 23, Oklahoma, Mar. 25, 2002 |
| Fewest Turnovers: | 7, Georgia, Mar. 25, 1995 |
| Blocks: | 15, UNLV, Mar. 18, 1989 |
| Steals: | 14, Long Beach State, Mar. 19, 1988 |
| Fewest Field Goals Made: | 11, Southwest Missouri State, Mar. 18, 1995 |
| Fewest Field Goals Attempted: | 48, Villanova, Mar. 24, 2003 |
| Lowest Field Goal Percentage: | .204 (11-54), Southwest Missouri State, Mar. 18, 1995 |
| Fewest Free Throws: | 2, Holy Cross, Mar. 16, 1995 |
| Fewest Free Throws Attempted: | 3, Holy Cross, Mar. 16, 1995 |
| Lowest Free Throw Percentage: | .500 (12-24), Southwest Missouri State, Mar. 18, 1995 |
| Fewest Rebounds: | 23, twice, most recent Siena, Mar. 17, 2001 |
| Fewest Fouls: | 12, Vanderbilt, Mar. 19, 2001 |
| Fewest Points: | 34, Southwest Missouri State, Mar. 18, 1995 |
| Fewest Assists: | 6, Southwest Missouri State, Mar. 18, 1995 |
| Most Turnovers: | 28, UC-Santa Barbara, Mar. 20, 1993 |
| Fewest Blocks: | 0 (four times), most recent Oklahoma, Mar. 25, 2002 |
| Fewest Steals: | 2, Vanderbilt, Mar. 19, 2001 |



COORS CLASSIC RECORDS

INDIVIDUAL RECORDS

(Single Game)



Brittany Spears

| | |
|---|--|
| Points | 36, Brittany Spears, Colorado (vs. UMass), 2008 |
| (Half) | 26, Gabriela Marginean, Drexel (vs. Colorado), 2008 |
| Field Goals Made | 12, Brittany Spears (vs. UMass), 2008; Robin Hasemann, Western Illinois (vs. Eastern Michigan), 1989 |
| Field Goals Attempted | 27, Lori Taylor, Vermont (vs. Fresno State), 1995 |
| Field Goal Percentage (min. 6 att.) | 1.000 (7-7), Samantha Heck, Evansville (vs. Eastern Washington), 2010; Eisha Bohman, Colorado (vs. Howard), 2000 |
| Three-Point Field Goals Made | 6, three times, last by Courtney Clements, San Diego State (vs. Auburn), 2012 |
| Three-Point Field Goals Attempted | 13, Courtney Clements, San Diego State (vs. Auburn), 2012; Jasmina Ilic, Colorado (vs. Utah State), 2005 |
| Three-Point Field Goal Percentage (min. 3 att.) | 1.000 (4-4), Keke Fletcher, Samford (vs. South Alabama) 2013 |
| Free Throws Made | 15, Hanna Zavec, Wyoming (vs. Charlotte), 2006 |
| Free Throws Attempted | 19, Hanna Zavec, Wyoming (vs. Charlotte), 2006 |
| Free Throw Percentage (min. 6 att.) | 1.000 (12-12), Gabriela Marginean, Drexel (vs. Colorado); Lisa Nicholls, Gonzaga (vs. Wisconsin), 1990 |
| Rebounds | 18, Dottie Van Gheem, Providence (vs. Eastern Michigan), 1989 |
| Offensive | 9, Laura Menty, Siena (vs. Clemson), 2007; Molly Hayes, Idaho State (vs. Colorado), 2003 |
| Defensive | 13, Valeriya Berezhynska, Rice (vs. Clemson), 2007 |
| Half (total) | 11, Dottie Van Gheem (1st), Providence (vs. Eastern Michigan), 1989; Erin Scholz (1st), Colorado (vs. Vermont), 1995 |
| Assists | 14, Shanya Evans, Providence (vs. Eastern Michigan), 1989 |
| Steals | 9, Jill Estey, Illinois (vs. Virginia Tech), 1991 |
| Blocked Shots | 6, 3 times, last by Emma Markley, Harvard (vs. New Orleans), 2009 |
| Turnovers | 11, Whitney Houston, Colorado (vs. Nevada) 2006, Angela Zampella, St. Joseph's (vs. Central Michigan), 1997 |
| Minutes | 44, Jessie Briggs, Northern Iowa (vs. Colorado), 2005 |

INDIVIDUAL RECORDS

(Tournament)



Chucky Jeffery

| | |
|---|---|
| Points | 56, Alli Nieman, Idaho, 1998 |
| Field Goals Made | 22, Laura Menty, Siena, 2007 |
| Field Goals Attempted | 40, Courtney Clements, San Diego State, 2012; Brittany Spears, Colorado, 2008 |
| Field Goal Percentage (min. 12 att.) | .765 (13-17) Samantha Heck, Evansville, 2010 |
| Three-Point Field Goals Made | 9, Mynette Clark, Wisconsin, 1990 |
| Three-Point Field Goals Attempted | 20, Jasmina Rosseel, Drexel, 2008 |
| Three-Point Field Goal Percentage (min. 6 att.) | .714 (5-7), Keke Fletcher, Samford, 2013 |
| Free Throws Made | 23, Jessica Kuster, Rice, 2013 |
| Free Throws Attempted | 29, Jessica Kuster, Rice, 2013 |
| Free Throw Percentage (min. 12 att.) | 1.000 (12-12), Vicky Johnson, La. Tech, 1995 |
| Rebounds | 26, Molly Hayes, Idaho State, 2003; Tobette Pleasant, Dayton, 1988 |
| Offensive | 14 Molly Hayes, Idaho State, 2003 |
| Defensive | 21, Justyna Podziemska, Wyoming, 2006 |
| Assists | 16, by six players (most recent Chucky Jeffery, Colorado, 2010) |
| Steals | 12, Jill Estey, Illinois, 1991 |
| Blocked Shots | 10, Emma Markley, Harvard, 2009 |
| Turnovers | 18, Angela Zampella, St. Joseph's, 1997 |
| Minutes | 78, Jessie Briggs, Northern Iowa, 2005 |

TEAM RECORDS

(Single Game)

| | |
|---|--|
| Points | 113, Providence (vs. Eastern Michigan), 1989 |
| Field Goals Made | 44, Washington (vs. West Virginia), 1993 |
| Field Goals Attempted | 89, Providence (vs. Eastern Michigan), 1989 |
| Field Goal Percentage | .585 (31-53), by Auburn (vs. Texas A&M-Corpus Christi) 2012 |
| Field Goal Percentage, Half | .704 (19-27), by Auburn (vs. Texas A&M-Corpus Christi) 2012 |
| Lowest Field Goal Percentage | .200 (12-60), Georgia Southern (vs. New Orleans), 2009 |
| Three-Point Field Goals Made | 14, Minnesota (vs. UMass), 2008 |
| Three-Point Field Goals Attempted | 34, Minnesota (vs. UMass), 2008 |
| Three-Point Field Goal Percentage (min. 8 att.) | .636 (7-11), Colorado (vs. SMU), 1996 |
| Free Throws Made | 32, Wyoming (vs. Nevada), 2006 |
| Free Throws Attempted | 46, Fresno St. (vs. Vermont), 1995 |
| Free Throw Percentage | 1.000 (20-20), George Mason vs. Miami (Ohio), 1998 |
| Rebounds | 62, Washington (vs. West Virginia), 1993 |
| Offensive | 29, Eastern Washington (vs. Loyola Chicago) 2010; Northern Iowa (vs. Colorado), 2005 |
| Defensive | 40, Colorado (vs. Nevada), 2006 |
| Half (total) | 36, Providence (vs. Eastern Michigan), 2nd, 1989 |
| Assists | 36, Washington (vs. West Virginia), 1993 |
| Steals | *24, Colorado (vs. Rice), 1997 |
| Blocked Shots | 10, Harvard (vs. New Orleans), 2009; Maryland (vs. Pennsylvania), 2004 |
| Most Turnovers | 36, Gonzaga (vs. Colorado), 1990 & Dayton (vs. Colorado), 1988 |
| Fewest Turnovers | 5, Vanderbilt (vs. Virginia Tech), 1991 |

TEAM RECORDS

(Tournament)

| | |
|--|--|
| Points | 186, Washington, 1990 |
| Field Goals Made | 70, Washington, 1990 & Eastern Michigan, 1989 |
| Field Goals Attempted | 159, Providence, 1989 |
| Field Goal Percentage | .539 (55-102) Colorado, 2006 |
| Three-Point Field Goals Made | 19, Colorado, 2007; Wisconsin, 1990 |
| Three-Point Field Goals Attempted | 61, Colorado, 2007 |
| Three-Point Field Goal Percentage (min. 16 att.) | .625 (15-24), Colorado, 1996 |
| Free Throws Made | 50, Wyoming, 2006 |
| Free Throws Attempted | 68, Colorado, 2006 |
| Free Throw Percentage | .870, (20-23), Charlotte, 2006 |
| Rebounds | 99, Eastern Washington, 2010; Colorado, 2006, Providence, 1989 |
| Offensive | 57, Eastern Washington, 2010 |
| Defensive | 68, Colorado, 2006 |
| Assists | 51, Colorado, 2000 |
| Steals | 35, Colorado, 1988, 1997 |
| Blocked Shots | 17, Maryland, 2004 |
| Turnovers | 66, Gonzaga, 1990 |

*tied earlier record